

# TOMATO SEED SAVING



# STEP 1



- Choose fully ripe disease-free tomatoes
- Fermentation removes germination inhibitors and the gelatinous sheath from seeds
- It may treat some seed-borne diseases.



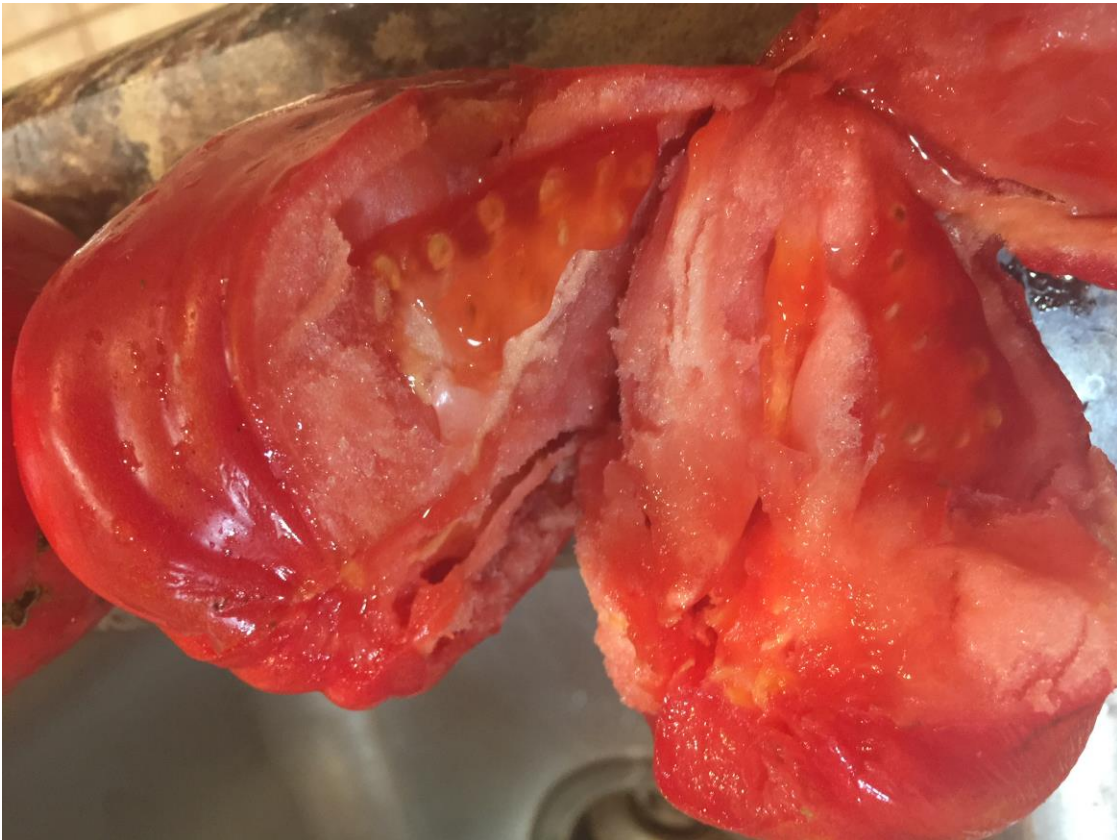
## STEP 2



- Rinse tomatoes in water to remove dirt before harvesting seeds.
- Cut off open or damaged parts of fruit.

## STEP 3

- Cut open ripe tomatoes one variety at a time to ensure varieties do not mix.



# STEP 4

Remove the pulp





## STEP 5

- Squeeze juice and seeds into a container.



## STEP 6



- Pour into another container and cover with a paper towel or coffee filter.
- Do not add water as a substitute for tomato juice since dilution slows fermentation.

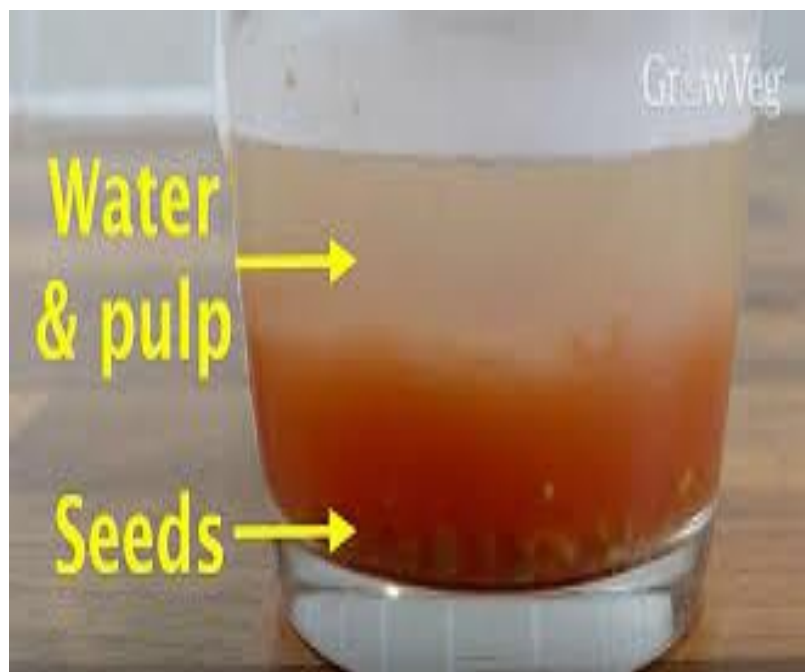
# STEP 7



- Label and set aside the containers for three days at a temperature not more than 70°F (21°C).
- Stir the fermenting juices once or twice daily, to submerge the pulpy material.



## STEP 8



- After three days, pour into a larger container and add three or more times the volume of water
- Pour off the pulpy water, but not the seeds at the bottom; viable tomato seeds will sink.
- Repeat two or three times until seeds are clean. **Note: not all viable seed varieties sink in water.**

## STEP 9



- Pour the seeds into a fine mesh sieve or window screen.
- Lightly spray off remaining gel or debris.

# STEP 10



- Place seeds on a paper plate or allow to dry on a screen.
- Label drying plate or screen with the variety name



# STEP 10



- Let the seeds dry for five to six days at room temperature in a well-ventilated place.
- Stir and crumble seeds with your fingers daily to prevent them clumping together.
- As the seeds dry, lightly rub clumps together between your palms to separate seeds.

# STEP 11



- Store dry seeds in a cool, dark, and dry place.
- Place label inside or outside of the container or bag.
- Refrigeration of seeds is not necessary, but okay.
- Properly stored tomato seeds may remain viable for over six years.



White Earth Tribal and Community College  
[www.wetcc.edu](http://www.wetcc.edu)

Community Extension Service Department  
[www.wetcc.edu/extension.html](http://www.wetcc.edu/extension.html)

Diane McArthur:RD,LD,CDE  
Extension Service Supervisor  
218-935-0417 Ext. 314  
[diane.mcarthur@wetcc.edu](mailto:diane.mcarthur@wetcc.edu)

Funding provided by: USDA, NIFA

created 2/19/21 DM



United States Department of Agriculture  
National Institute of Food and Agriculture